

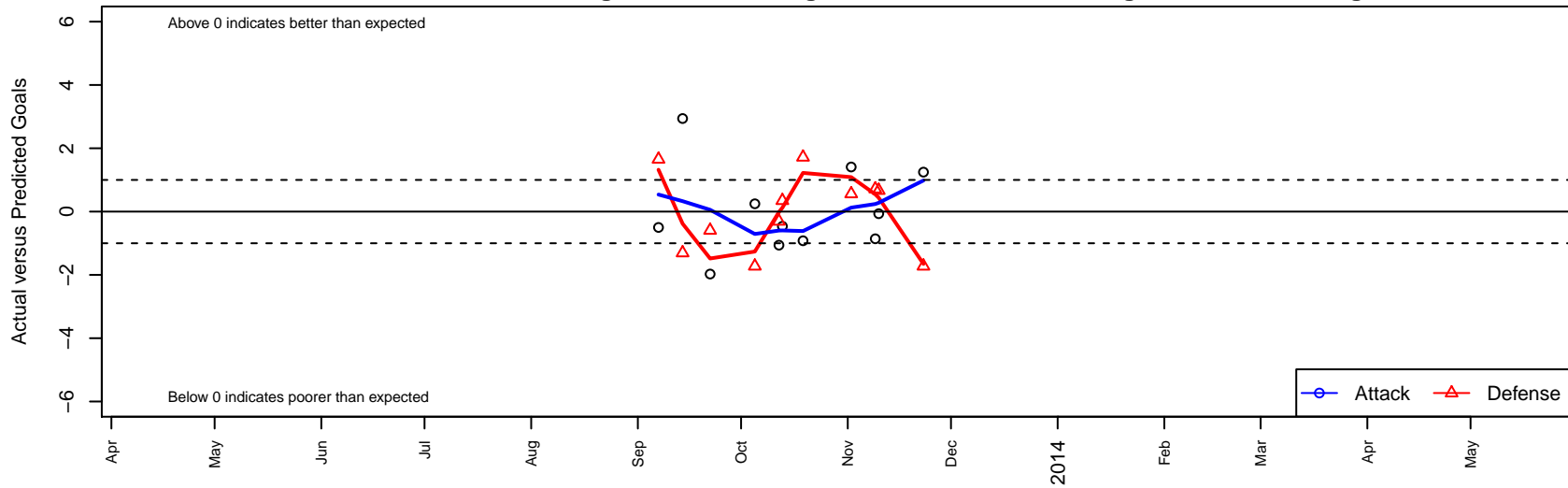
# Palo Alto SC 99 Blue B98

, CAN  
 B98 total strength=1688  
 attack=34.5 defense=13.7  
 alt names used:  
 PALO ALTO SC 99B BLUE

Venues played:  
 NorCal NPL P1 State Premier 2 U15  
 NorCal State Cup State/Premier/Gold 1/Gold 2



**Palo Alto SC 99 Blue B98**  
 Dots are actual minus expected GF (blue circles) and GA (red triangles).  
 Blue line is smoothed change in attack strength. Red is smoothed change in defense strength.



date	home		away		venue	pred.home	pr
'013-11-23	Monterey County FC United Salinas B98	4	Palo Alto SC 99 Blue B98	3	NorCal NPL P1 State Premier 2 U15	2.3	
'013-11-10	Richomond Sol Cobras B98	1	Palo Alto SC 99 Blue B98	3	NorCal State Cup State/Premier/Gold 1/Gold 2 U15	1.7	
'013-11-09	Palo Alto SC 99 Blue B98	2	CA San Jose United B98	1	NorCal NPL P1 State Premier 2 U15	2.9	
'013-11-02	Mustang SC Lokomotiv B98	1	Palo Alto SC 99 Blue B98	4	NorCal NPL P1 State Premier 2 U15	1.6	
'013-10-19	Palo Alto SC 99 Blue B98	1	Impact SC B98	1	NorCal NPL P1 State Premier 2 U15	1.9	
'013-10-13	De Anza Force SC Blue B98	3	Palo Alto SC 99 Blue B98	1	NorCal State Cup State/Premier/Gold 1/Gold 2 U15	3.3	
'013-10-12	Palo Alto SC 99 Blue B98	3	Walnut Creek SC Crew B98	2	NorCal NPL P1 State Premier 2 U15	4.1	
'013-10-05	Palo Alto SC 99 Blue B98	2	Monterey County FC United Salinas B98	4	NorCal NPL P1 State Premier 2 U15	1.8	
'013-09-22	Palo Alto SC 99 Blue B98	0	Union City SC Juventus B98	2	NorCal State Cup State/Premier/Gold 1/Gold 2 U15	2.0	
'013-09-14	Walnut Creek SC Crew B98	3	Palo Alto SC 99 Blue B98	7	NorCal NPL P1 State Premier 2 U15	1.7	
'013-09-07	ACC Mavericks Cosmos FC B98	1	Palo Alto SC 99 Blue B98	0	NorCal NPL P1 State Premier 2 U15	2.7	